

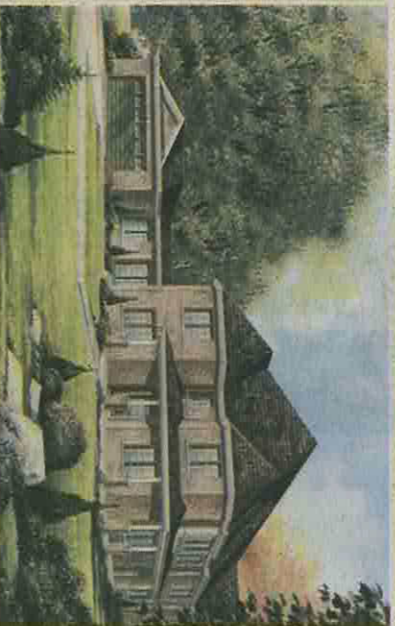
NOW OPEN



miltontrails
ON THE ESCARPMENT

A Fresh Start

in Milton's complete masterplanned community
at the foot of the Niagara Escarpment
with over 50 acres of parks, ponds & greenspace
All Brick Towns & Semis*



Townhomes from the **\$250's**

Semis from the **\$280's**



36', 38' & 43' Singles* also available from the **\$330's**
presentation centre hours:
mon. to thurs.: 1 p.m. - 8 p.m.
sat., sun. & hol.: 11 a.m. - 6 p.m.
friday: closed

miltontrails.com

*Selected elevations are subject to alternate accent material. Prices, terms & specifications are subject to change without notice. E.&O.E.



Greenpark
CANADA'S LARGEST HOME BUILDER™

